



Olfactory receptor 8D1 rabbit pAb

Cat No.:ES3074

For research use only

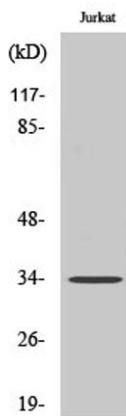
Overview

Product Name	Olfactory receptor 8D1 rabbit pAb
Host species	Rabbit
Applications	WB;IF;ELISA
Species Cross-Reactivity	Human;Rat;Mouse;
Recommended dilutions	Western Blot: 1/500 - 1/2000. Immunofluorescence: 1/200 - 1/1000. ELISA: 1/20000. Not yet tested in other applications.
Immunogen	The antiserum was produced against synthesized peptide derived from human OR8D1. AA range:234-283
Specificity	Olfactory receptor 8D1 Polyclonal Antibody detects endogenous levels of Olfactory receptor 8D1 protein.
Formulation	Liquid in PBS containing 50% glycerol, 0.5% BSA and 0.02% sodium azide.
Storage	Store at -20°C. Avoid repeated freeze-thaw cycles.
Protein Name	Olfactory receptor 8D1
Gene Name	OR8D1
Cellular localization	Cell membrane; Multi-pass membrane protein.
Purification	The antibody was affinity-purified from rabbit antiserum by affinity-chromatography using epitope-specific immunogen.
Clonality	Polyclonal
Concentration	1 mg/ml
Observed band	34kD
Human Gene ID	283159
Human Swiss-Prot Number	Q8WZ84
Alternative Names	OR8D1; OR8D3; Olfactory receptor 8D1; OST004; Olfactory receptor 8D3; Olfactory receptor OR11-301; Olfactory receptor-like protein JCG9 olfactory receptor family 8 subfamily D member 1(OR8D1) Homo sapiens Olfactory receptors interact with odorant molecules in the nose, to
Background	



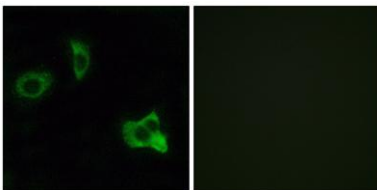


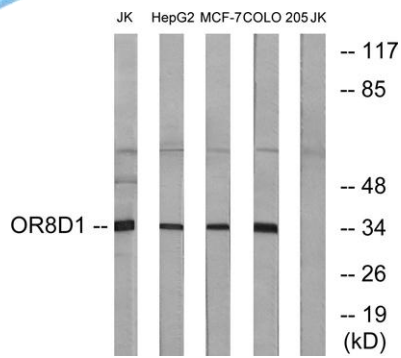
initiate a neuronal response that triggers the perception of a smell. The olfactory receptor proteins are members of a large family of G-protein-coupled receptors (GPCR) arising from single coding-exon genes. Olfactory receptors share a 7-transmembrane domain structure with many neurotransmitter and hormone receptors and are responsible for the recognition and G protein-mediated transduction of odorant signals. The olfactory receptor gene family is the largest in the genome. The nomenclature assigned to the olfactory receptor genes and proteins for this organism is independent of other organisms. [provided by RefSeq, Jul 2008],



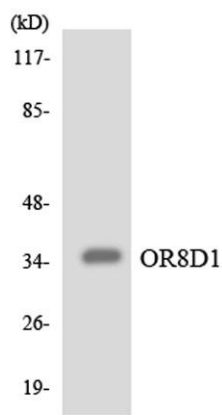
Western Blot analysis of various cells using Olfactory receptor 8D1 Polyclonal Antibody

Immunofluorescence analysis of MCF7 cells, using OR8D1 Antibody. The picture on the right is blocked with the synthesized peptide.





Western blot analysis of lysates from Jurkat, HepG2, MCF-7, and COLO cells, using OR8D1 Antibody. The lane on the right is blocked with the synthesized peptide.



Western blot analysis of the lysates from HUVEC cells using OR8D1 antibody.

